

CURVE NO.	TYPE	LEFT	RIGHT	LS (I)	LS (O)	TS	ES	e
RD23/1	LEFT	0+033.240	0+076.913	0.00 m	0.00 m	25.492 m	1.296	-0.025 %
RD23/2	RIGHT	0+076.913	0+114.472	0.00 m	0.00 m	5.547 m	0.051	-0.025 %



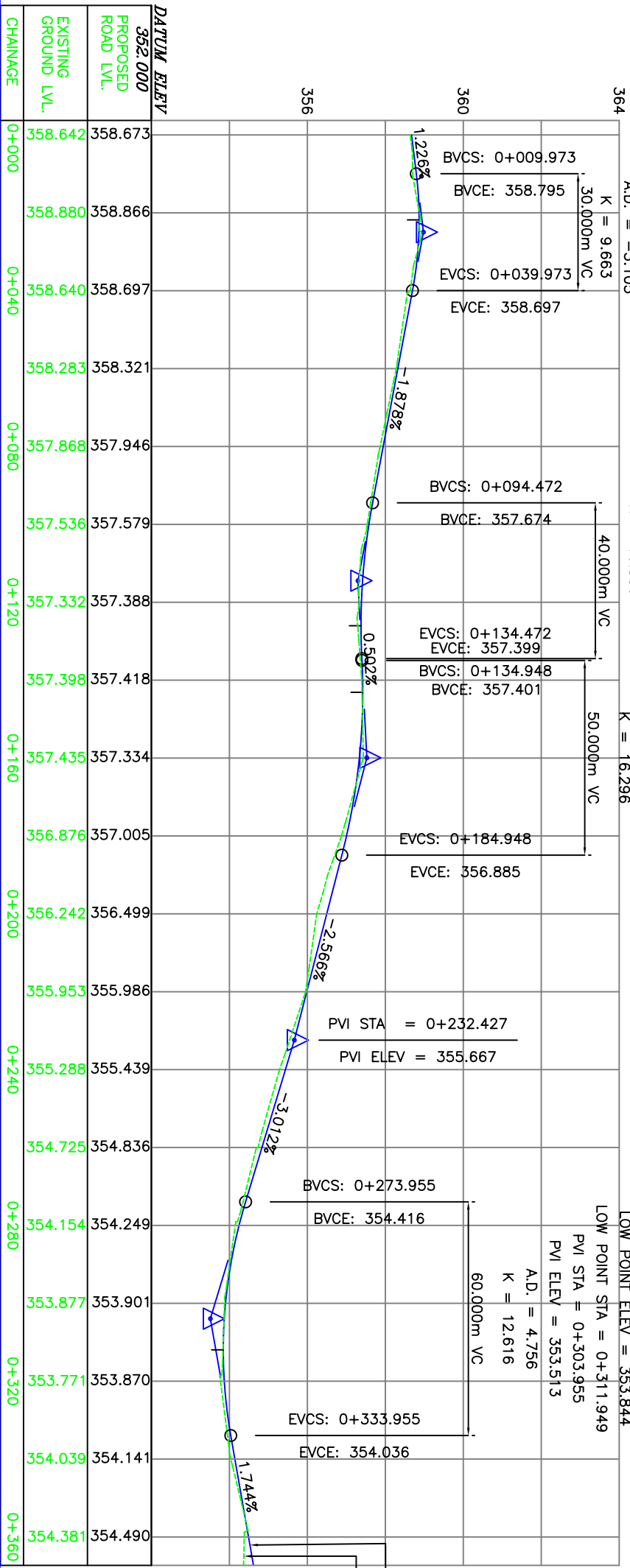
CURVE NO.	TYPE	LEFT	RIGHT	LS (I)	LS (O)	TS	ES	e
RD23/1	LEFT	0+033.240	0+076.913	0.00 m	0.00 m	25.492 m	1.296	-0.025 %
RD23/2	RIGHT	0+076.913	0+114.472	0.00 m	0.00 m	5.547 m	0.051	-0.025 %

HIGH POINT ELEV = 358.868
 HIGH POINT STA = 0+021.822
 PVI STA = 0+024.973
 PVI ELEV = 358.979
 A.D. = -3.105
 K = 9.663
 30.000m VC

LOW POINT ELEV = 357.377
 LOW POINT STA = 0+126.031
 PVI STA = 0+114.472
 PVI ELEV = 357.298
 A.D. = 2.381
 K = 16.800

HIGH POINT ELEV = 357.421
 HIGH POINT STA = 0+143.136
 PVI STA = 0+159.948
 PVI ELEV = 357.527
 A.D. = -3.068
 K = 16.296

LOW POINT ELEV = 353.844
 LOW POINT STA = 0+311.949
 PVI STA = 0+303.955
 PVI ELEV = 353.513
 A.D. = 4.756
 K = 12.616
 60.000m VC



NOTICE: THIS DRAWING HAS NOT BEEN PUBLISHED AND IS THE SOLE PROPERTY OF CONSULTING ENGINEERING SERVICES (I) PVT. LTD. AND IS ISSUED TO THE CLIENT FOR THE SPECIFIC PURPOSE AS STATED IN THE AGREEMENT AND IT SHALL NOT BE REPRODUCED, COPIED, OR USED FOR ANY OTHER PURPOSE OTHER THAN FOR WHICH IT IS INTENDED.

EMPLOYER: NANDED WAGHALA CITY MUNICIPAL CORPORATION

CONSULTANT TO: JNNURM

PROJECT: DPR FOR DEVELOPMENT OF NANDED CITY ROADS UNDER BAND A GHAT

ROAD: VAZIABAD ROAD TO BAND A GHAT

PLAN AND PROFILE FOR TENDER: CH:0+000 TO 0+387.331

SCALE: HORIZ. - 1:1000, VERT. - 1:100

PURPOSE: FOR TENDER

DRAWING NO.: 2006069/RH/RD23/JP-001

DATE: 19-08-2006

REVISION: R0

DRAWN BY: MADHAVI

CHECKED BY: G.H.REDDY

APPROVED BY: DR. C.S.S.