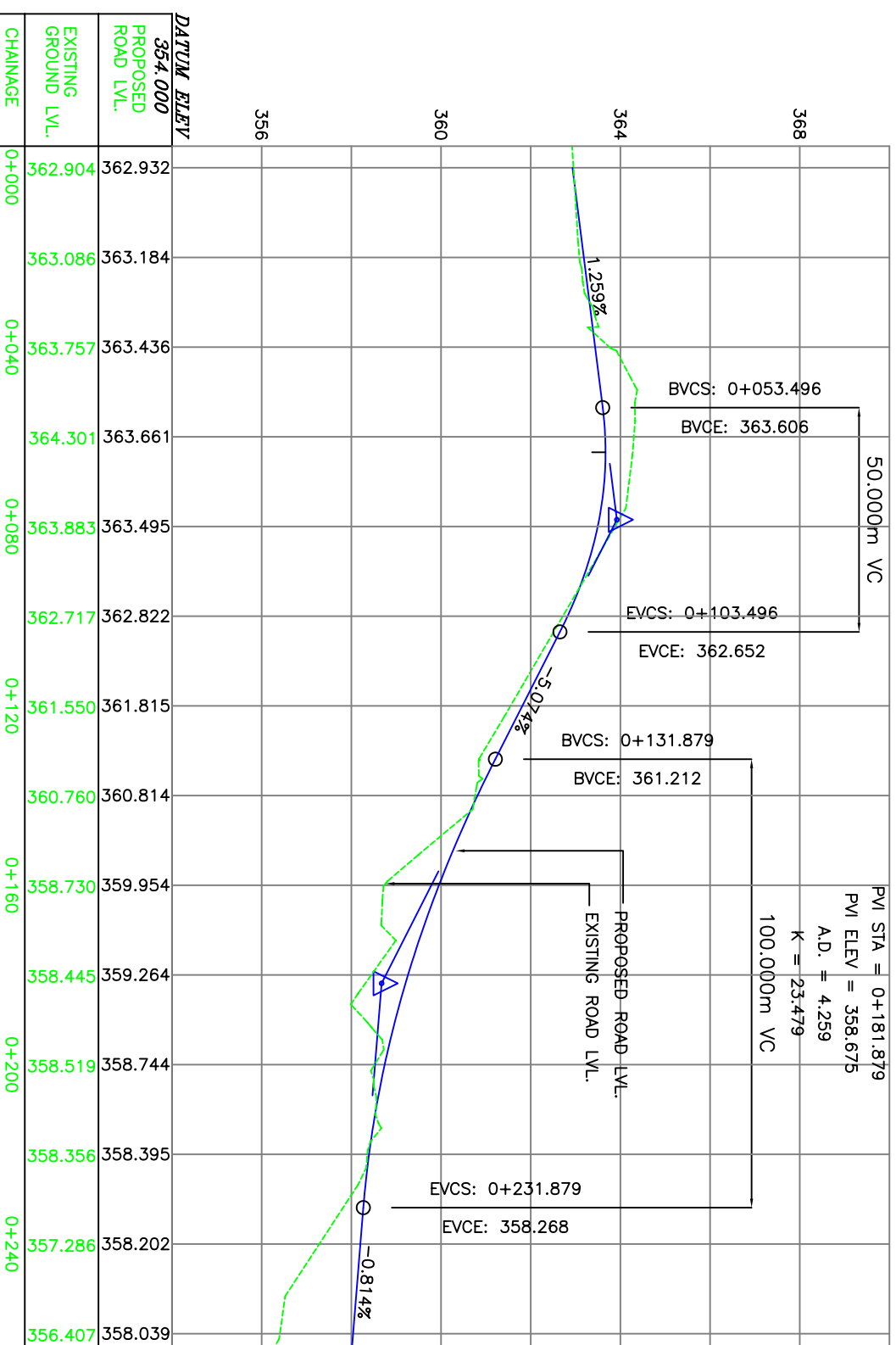


CURVE NO. RD6/1					
TYPE	LEFT	Rs (l)	Ts (l)	Es (l)	e (l)
HIP CH:	0+045.758	0.00 m	20.325m	3.973	0.020 %
R	50 m				
Δ	44° 14' 35"				
V	30 Kmph				
Lc	38.609m				

CURVE NO. RD6/2					
TYPE	RIGHT	Rs (l)	Ts (l)	Es (l)	e (l)
HIP CH:	0+157.294	0.00 m	35.116 m	3.059	-0.025 %
R	200 m				
Δ	19° 55' 01"				
V	50 Kmph				
Lc	69.524 m				

HIGH POINT ELEV = 363.668
 HIGH POINT STA = 0+063.438
 PVI STA = 0+078.496
 PVI ELEV = 363.920
 A.D. = -6.333
 K = 7.895

PVI STA = 0+181.879
 PVI ELEV = 358.675
 A.D. = 4.259
 K = 23.479



NOTICE:
 THIS DRAWING HAS NOT BEEN PUBLISHED AND IS THE SOLE PROPERTY OF CONSULTING ENGINEERING SERVICES (I) PVT. LTD. AND IS ISSUED TO THE CLIENT FOR THE SPECIFIC PURPOSE AS STATED IN THE AGREEMENT AND IT SHALL NOT BE REPRODUCED, COPIED, EITHER WHOLLY OR PARTIALLY, OR TRANSMITTED IN ANY FORM OR BY ANY MEANS, ELECTRONIC OR MECHANICAL, INCLUDING PHOTOCOPYING, RECORDING, OR BY ANY INFORMATION STORAGE AND RETRIEVAL SYSTEM, WITHOUT THE WRITTEN PERMISSION OF CONSULTING ENGINEERING SERVICES (I) PVT. LTD. FOR WHICH IT IS INTENDED.

EMPLOYER: NANDED WAGHALA CITY MUNICIPAL CORPORATION
 CONSULTANT TO THE PROJECT: CONSULTING ENGINEERING SERVICES (I) PVT. LTD. MUMBAI
 PROJECT: DPR FOR DEVELOPMENT OF NANDED CITY ROADS UNDER JNNURM
 ROAD: DARBAR MASJID CHOWK TO FORT

PLAN AND PROFILE: CH:0+000 TO 0+264.782
 SCALE: HORIZ. - 1:1000, VERT. - 1:100
 PURPOSE: FOR TENDER, FOR APPROVAL
 DRAWING NO.: 2006069/RH/RD6/PP-001
 DRAWN: MADHAVI, DESIGN: T.MANDAL, CHECKED: G.H.REDDY, APPROVED: DR. C.S.S.
 DATE: 05-07-2006