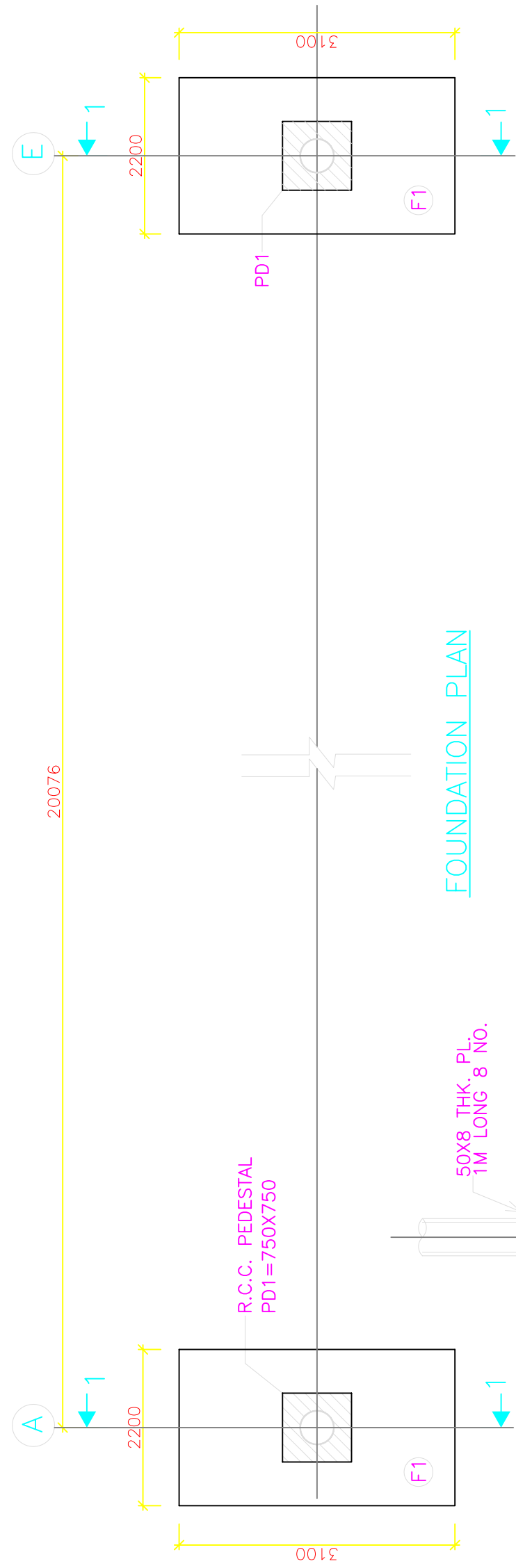


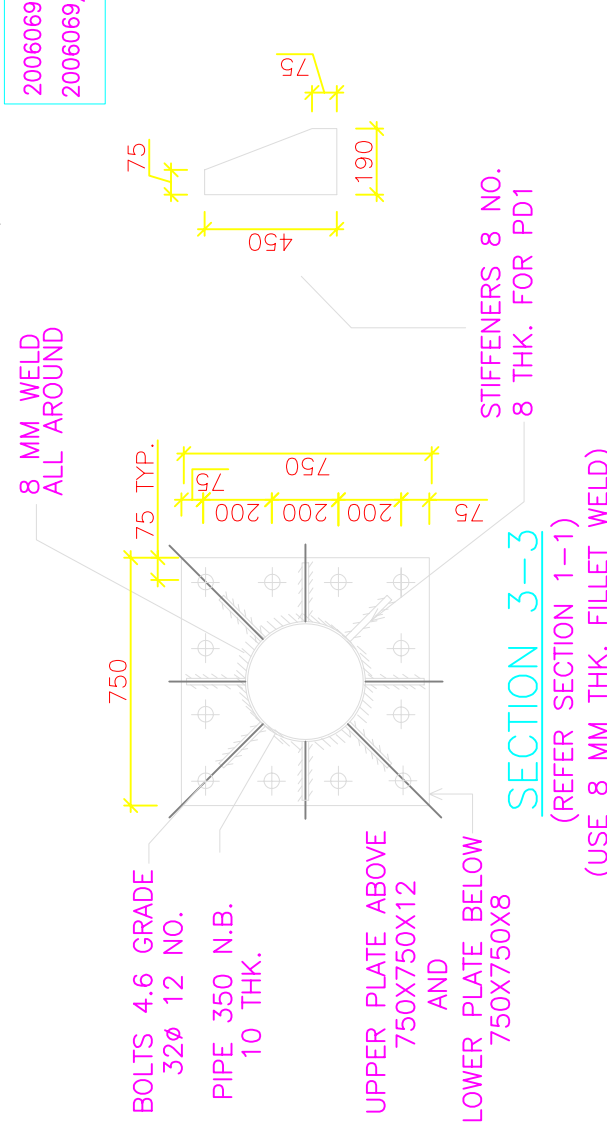
- NOTES:-**
1. ALL DIMENSIONS ARE IN MM.
 2. DO NOT SCALE, FOLLOW WRITTEN DIMENSIONS ONLY.
 3. CONCRETE MIX FOR ALL R.C.C. WORK=M20
 4. CLEAR COVER FOR R.C.C. PEDESTALS=40 MM
 5. CLEAR COVER FOR R.C.C. FOOTINGS=50 MM
 6. ALL STRUCTURAL STEEL SHALL CONFORM TO IS:2062.FABRICATION & ERECTION SHALL CONFORM TO IS:800
 7. ALL WELDS ARE 6MM FILLET WELDS UNLESS MENTIONED OTHERWISE.
 8. WELDING SHALL BE CARRIED OUT IN ACCORDANCE WITH IS:816 & IS:823.
 9. ALL REINFORCEMENT SHALL BE TOR STEEL CONFORMING TO I.S. 1786-1968 .
 10. S.B.C. ASSUMED AS 12.5 t/m² AT A DEPTH OF 2.3 M FROM N.G.L. FOR THE PURPOSE OF FOUNDATION DESIGN.

REFERENCE DRAWINGS:-

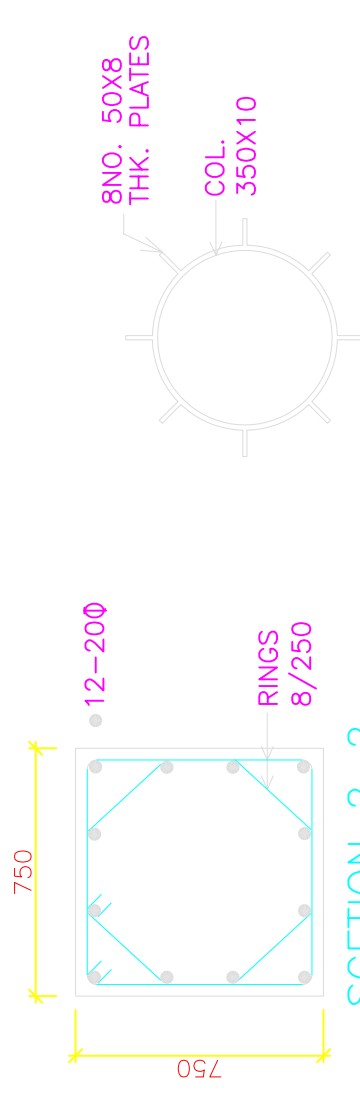
20060692006069/RH/STD-022 - SPACE FRAME DETAILS
 2006069/RH/STD-021 - MISC. CONNECTION DETAILS.



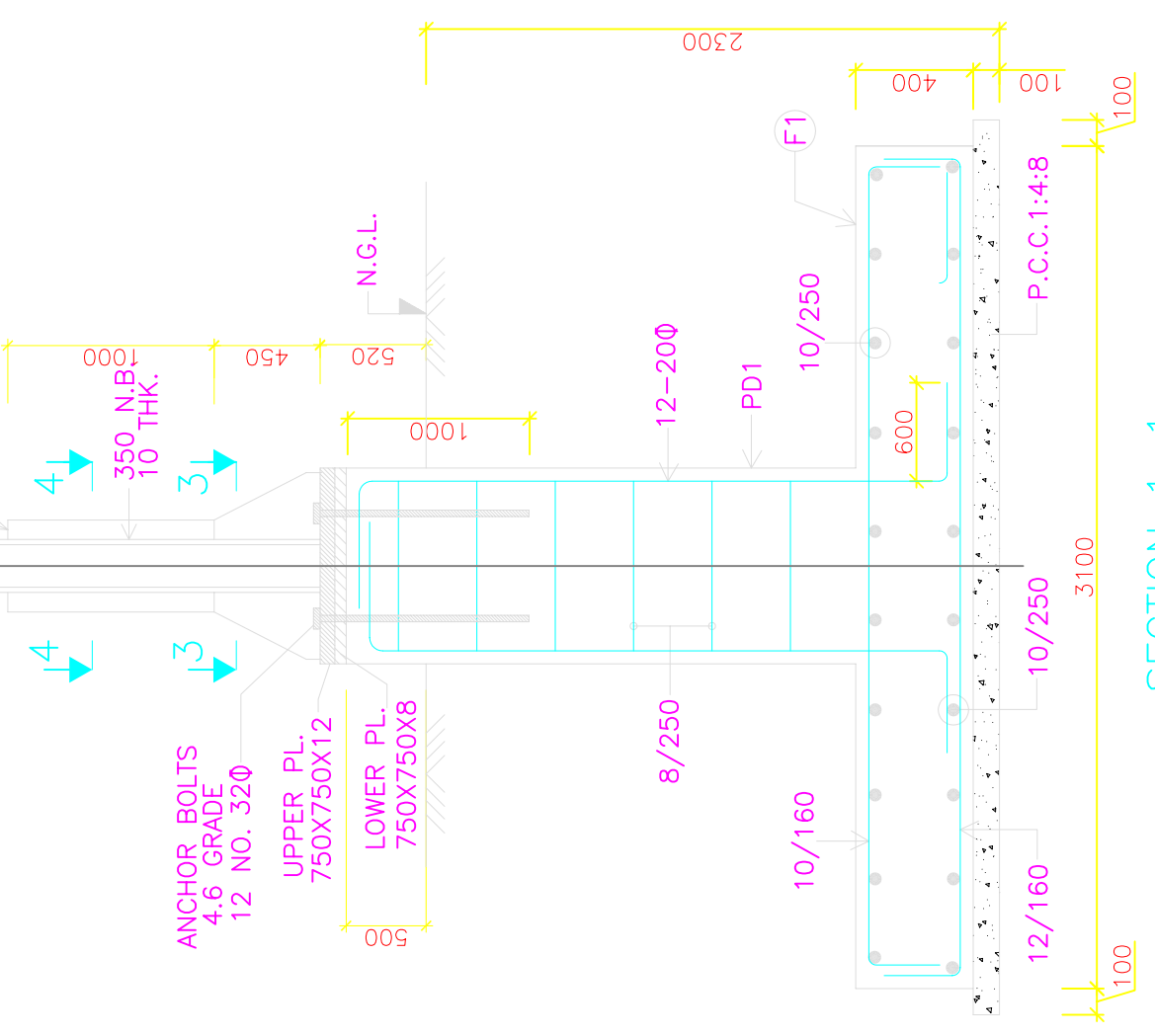
FOUNDATION PLAN



SECTION 3-3
 (REFER SECTION 1-1)
 (USE 8 MM THK. FILLET WELD)



SECTION 2-2
R.C.C. PEDESTAL PD1
(750X750)



SECTION 1-1
 (REFER FOUNDATION PLAN)

REV.	DATE	DESCRIPTION OF REVISIONS	INITIALS	CONSULTANT TO ITNL	EMPLOYER	PROJECT	15M SPAN GANTRY FOUNDATION DETAILS	PURPOSE	DRAWING NO.	DATE	REVISION
				HE MUMBAI	NANDED WAGHALA CITY MUNICIPAL CORPORATION	DPR FOR DEVELOPMENT OF NANDED CITY ROADS UNDER JNNURM	HORZ. - N.T.S. VERT. - N.T.S.	FOR TENDER	2006069/RH/STD-020	13-06-2006	R0
				CONSULTING ENGINEERING SERVICES (I) PVT. LTD KOLKATA				STATUS	DRAWN	CHECKED	APPROVED
				NEW DELHI				FOR APPROVAL	PRATIBHA	G.H.REDDY	DR. C.S.S.